



JULY 2023

4-H Family News

Washtenaw County



Welcome Amy Harris, Washtenaw County 4-H Program Coordinator

Please help us in welcoming Amy Harris, the new 4-H Program Coordinator for Washtenaw County. Amy has been involved in 4-H for over 35 years as a youth, volunteer, and leader. She grew up raising livestock and rode horses at the fair for a few years.

She has previously worked as a 4-H Program Assistant in Wayne County, bringing 4-H and agriculture to youth in urban areas.

This year, she co-chaired and created a new agricultural business program in Wayne County.

Amy lives on a small farm where her husband and two children raise pigs, goats, cattle, chickens, and sheep.

Amy starts in her position on July 10th and we encourage youth and volunteers to welcome her!



UPCOMING MEETINGS & EVENTS

Superintendent Meeting

July 6th at 6:30 pm at the MSU Extension Office

Small Animal Committee Meeting

July 12th at 6:00 pm at MSU Extension Office

Horse Association Packet Stuffing

July 11th at 7 pm at MSU Extension Office

Advisory Council Meeting

July 13th at 7:00 pm at the MSU Extension Office

Livestock and Dairy Committee Meeting

July 18th at 7:00 pm at Washtenaw Farm Council Grounds

Horse Association Packet Hand Out

July 20th after set up at Washtenaw Farm Council Grounds

Horse Association Decorating Stalls

July 22nd at 11 am on the Hill at the Washtenaw Farm Council Grounds

CONTACT US

Amy Harris

4-H Program Coordinator

harr1976@msu.edu

Jenny Speyer

4-H Program Instructor

speyerje@msu.edu

705 N. Zeeb Rd.,
P.O. Box 8645
Ann Arbor, Michigan
48107

PHONE & EMAIL:

734-997-1678

msue.washtenaw@county.msu.edu

WEBSITE:

<https://www.canr.msu.edu/washtenaw/>

MSU is an affirmative-action, equal-opportunity employer, committed to achieving excellence through a diverse workforce and inclusive culture that encourages all people to reach their full potential. Michigan State University Extension programs and materials are open to all without regard to race, color, national origin, gender, gender identity, religion, age, height, weight, disability, political beliefs, sexual orientation, marital status, family status or veteran status. Issued in furtherance of MSU Extension work, acts of May 8 and June 30, 1914, in cooperation with the U.S. Department of Agriculture. Quentin Tyler, Director, MSU Extension, East Lansing, MI 48824. This information is for educational purposes only. Reference to commercial products or trade names does not imply endorsement by MSU Extension or bias against those not mentioned.



COUNTY 4-H NEWS

Washtenaw County 4-H Needs Your Help to Staff the 4-H Kitchen!



This year, we need clubs and 4-H volunteers to help with the 4-H Kitchen. The 4-H Kitchen not only provides affordable food for the Washtenaw County 4-H Youth Show, but also provides financial support for annual youth scholarships and county wide 4-H programs. We cannot run the 4-H Kitchen without volunteer support!!

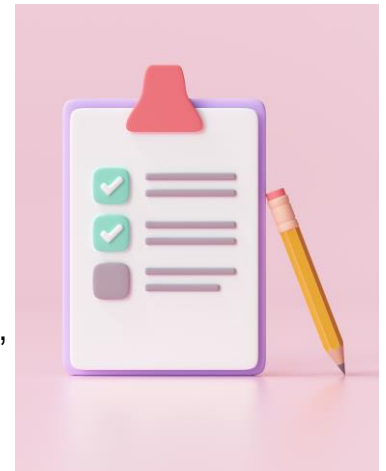
Youth and families can sign up here:

<https://www.signupgenius.com/go/10C0945ABAC28ABFDCF8-youth>

Reminder: Adults who sign up do need to complete the SILVER level volunteer screening. This DOES NOT require an interview, references, or trainings. They will only need to complete an application and consent to a background check. If you have questions about the process, please email Jenny at speyerje@msu.edu.

Still Projects Committee Clerks and Runners Sign Up

Every club with member(s) participating in Still Projects of any type (Dept 60 and higher) is **required** to provide at least one full shift clerk or runner or at least two half shift clerks or runners to assist with judging. Remember, the 4-H Youth Show can't happen without YOU! Clerks and runners are needed Sunday, July 23, 12:30 PM-4:30 PM in Building B (Open Pavilion). Clerk Orientation MUST be completed prior to this time either in person at the Youth Show or with our Still Project Superintendents before hand. Clerks and runners can be **anyone** who meets the age requirements— 4-H members, parents, leaders, alumni, grandparents, friends, etc. Check out the [Sign Up Form](#) for more information on the roles and age requirements. These forms can be returned to Jenny at speyerje@msu.edu or returned to the MSU Extension Office.



Market Livestock Exhibitors Buyers Buffett Sign Up



Youth marketing livestock at the Washtenaw County 4-H Youth Show are expected to volunteer for one hour at the Buyer's Buffet on Thursday evening, July 27th and bring a dessert to share. Youth/family members can sign up for your volunteer shift with the sign up genius here:

<https://www.signupgenius.com/go/4090F4BACA929ABFC1-volunteer>

NOTE: the previous sign up genius sent out was for past champions. Please make sure to sign up on this one for this year's exhibitors.



COUNTY 4-H NEWS

Congrats to William Rogers on Being a Finalist for State Awards!

William Rogers from Saline 4-H Farmers 4-H Club applied for 4-H State Awards in the Senior Division this year. William completed a 14-page application portfolio including a cover letter, resume, 4-H experience and impact story, and application questions. He also prepped for and interviewed during the application process. William then traveled to Michigan State University for the State Awards Program and although he didn't win, he was a finalist. Please join us in congratulating William on his hard work in completing and submitting his application.



Camping During the 4-H Youth Show Deadline July 10th



Time is running out to reserve a camping spot at the Washtenaw Farm Council Grounds for the Washtenaw County 4-H Youth Show. This year, the Washtenaw Farm Council Grounds staff is handling camping reservations and the deadline is July 10th. They have one 50 amp spot available and the rest are 20 amp spots. Contact Kirk Poirier & Kyle Latta at the Washtenaw Farm Council Grounds at 734-429-3145 or by email at wfc5500@gmail.com to reserve a spot before the deadline.

Still Project Judges Needed for July 23rd at the 4-H Youth Show

The Still Projects Committee is looking for Still Projects Judges for July 23rd at the Washtenaw County 4-H Youth Show. Judges should be flexible and ready to judge multiple project areas. You do not need to be an expert in an area, you just need the ability to talk to young people and encourage them to talk about their projects! If you are interested in judging, please contact Jean Martin, at jmmartin@umich.edu or 734-662-9059.



Trash Cans, Foam, and More Project Forms!



Did a youth in your family sign up for a foam project? Does your club need a trash can? Looking for still project forms? Foam can be picked up at the MSU Extension Office during our office hours of Monday, Wednesday, and Friday 8 am – 3 pm and Tuesday and Thursday 9 am – 4 pm. Project forms can be found on the [4-H Youth Show page](#) of our website. If you need a trash can to decorate, please email Jenny Speyer at speyerje@msu.edu.



COUNTY 4-H NEWS

Volunteers Needed for Make and Take Crafts on July 29th from 9 am – 12 pm



We are looking for volunteers to help with make and take crafts at the Youth Show on Thursday, July 29th from 9 am – 12 pm. Supplies and activities will be supplied, we just need enthusiastic volunteers who want to help youth and families participate. This is a great volunteer role for adults but also for youth ages 12+ years old. Please contact Jenny Speyer, 4-H Program Instructor at speyerje@msu.edu if you are interested!

Apply Now for Washtenaw County 4-H Scholarships!

We are now accepting applications for the Washtenaw County 4-H Scholarship funded by the Advisory Council and Service Club,. There is also a Washtenaw County Farm Bureau Scholarship for youth ages 15-19 years old. Below are the deadlines for the applications and links to the application forms. Questions? Please contact Jenny Speyer, 4-H Program Instructor at speyerje@msu.edu



- [Washtenaw County 4-H Scholarship](#): Due September 1st
- [Outstanding Involvement in Agriculture Award for 4-H Member](#): Due August 4th

County Awards Applications Available at Youth Show

Paper copies of the County Awards Applications will be available at the 4-H Office during the Washtenaw County 4-H Youth Show. After the Youth Show, we will have electronic option that will also allow you to submit these online. This is a great opportunity to start thinking about youth and adults who deserve nominations for these awards. Awards include:



- County Medal Nomination Form (13-19 years old)
- 4-H Club Spirit Nomination Form (5-12 years old)
- I Dare You Award (Seniors or Post High Schoolers)
- Key Club Application Form (16-19 years old)
- Alumni of the Year Nomination Form
- Friend of 4-H Nomination Form
- Leader of Year Nomination Form

We would like nominations in all areas from EVERY CLUB! There are many worthy people and businesses out there who help us do what we do, as well as younger members who could benefit from this recognition.



STATEWIDE CALENDAR OF EVENTS

Save the Date for the Michigan 4-H Creative Arts Celebration



Save the date for the Michigan 4-H Creative Arts Celebration! Formerly known as the Visual Arts, Crafts, Sewing and Textiles Workshop, this popular event will be held October 14-15 at the new location of the Ralph A. MacMullen (RAM) Conference Center in Roscommon.

Participants (4-H adult and teen Gold leaders) will be learning new things, making new friends, putting all their creativity to work, and having a fabulous time!

Do you have a creative arts skill you're willing to share? We are looking for potential instructors who can teach a session about sewing, textiles, visual arts, performing arts, crafts, cooking, photography, poetry, music and more! To submit your idea for consideration, complete the form at: <https://forms.gle/1zwPdPwukwUjVigAA>.

July 11-13: Garden Writers Workshop

Michigan 4-H Children's Gardens, East Lansing

Young writers will learn about the wonderful world of writing in the garden. Using the garden as their inspiration, campers will connect writing to nature by creating poems, stories, plays and much more.

www.canr.msu.edu/events/garden-writers

July 13: Adulting 101 - Sew What!

Online

Not sure about detergent, bleach, fabric softener and dryer sheets? Have a loose button or need something hemmed? We'll spend an hour addressing these concerns and sew much more!

www.canr.msu.edu/events/adulting-101-7-13

July 15: 4-H Bullseye Bash Archery Tournament

Wexford County Civic Center, Cadillac

Archers to the line! Test your skill and meet fellow competitors at this 4-H archery event.

www.canr.msu.edu/events/4-h-bullseye-bash-archery-tournament

July 17: Michigan Dairy Expo and Michigan 4-H Youth Dairy Days

MSU Pavilion, Lansing

Join youth from around Michigan to demonstrate dairy cattle knowledge and husbandry skills.

Registration is due July 5!

www.canr.msu.edu/events/2023-michigan-4-h-youth-dairy-days

July 18-20: 4-H Forestry Camp

Gahagan Nature Preserve, Roscommon

This fun and interactive three-day camp gives youth the opportunity to learn all about forestry in Michigan. Registration closes July 14.

www.canr.msu.edu/events/4-h-forestry-camp-23

July 20: Water Day at the Michigan 4-H Children's Gardens

Michigan 4-H Children's Gardens, East Lansing

Come cool off from the summer heat and have fun in the garden with water! We will play water games, do water art and explore all things fun about water.

www.canr.msu.edu/events/water-day

July 27: Bug Day at the Michigan 4-H Children's Gardens

Michigan 4-H Children's Gardens, Lansing

We will be collecting bugs, observing bugs and even making bugs!

www.canr.msu.edu/events/bug-day





STATEWIDE 4-H NEWS

Join the Michigan State Fair 4-H & Youth Virtual Showcase!

MSU Extension is thrilled to partner again in 2023 with the [Michigan State Fair](#) on an exciting program for Michigan youth: the Michigan State Fair 4-H & Youth Virtual Showcase. This statewide showcase provides a virtual platform for youth across Michigan to exhibit their work in all project areas and apply for up to \$10,000 in scholarships. Any Michigan youth ages 5-19 is encouraged to participate; 4-H membership is not required.

[Registration for this event is now open!](#) The diverse array of [classes](#) celebrate all the projects and programs in which youth have developed skill and mastery. This includes livestock and animal showmanship classes, as well as still exhibits, educational projects and more.

There is no cost to participate and youth may engage in as many classes as they wish by [submitting project photos and videos](#). **Be sure to submit your entries by the registration deadline of August 1.** Project evaluation will occur before the start of the Michigan State Fair so that winners can be announced at the event which occurs August 31 – September 4.

In addition to the opportunity to showcase their skills, recognize their accomplishments and receive constructive feedback for growth and development, participants in the Michigan State Fair 4-H & Youth Virtual Showcase will also have the opportunity to apply for \$10,000 in scholarships. Learn more, find helpful resources and registration links at www.canr.msu.edu/virtual-showcase/State-Fair-Virtual-Showcase/.



Going home: Biosecurity tips for animals that went to the county fair

Adapted from: https://www.canr.msu.edu/news/biosecurity_tips_for_animals_that_went_to_the_county_fair.

[Michigan State University Extension](#) offers these biosecurity steps exhibitors can take to protect their show animals and those that were left at home after the fair has ended.

- Keep animals that were at the fair separate from animals that were not for 28 – 30 days. If at all possible, do not allow nose-to-nose contact and provide as much distance between animals.
- Disinfect all buckets, feeders, tools and footwear that was at the fair.
- Throw away any feed or hay that was at the fair.
- Always wear clean clothes and footwear. Boot coverings may be helpful when caring for animals.
- Take care of animals that stayed home from the show first, and animals that were at the show second. Do not go back and forth between animals as this increases the risk of cross-contamination.
- Do not eat or drink in the barn.
- Observe animals daily for signs and symptoms of illness, such as:
 - Obvious pain or discomfort
 - Decrease in appetite and water intake
 - Fever
 - Lethargy
 - Diarrhea or changes in consistency in manure
 - Discharge from nasal cavity or eyes
 - Overall weakness

Care of animals after the fair is just as critical as their before-fair care. Exhibited animals were exposed to new animal populations and fair goers, and most likely experienced a lot of stress during their time away from the farm. By practicing these biosecurity steps, you can help keep all of your animals safe and healthy.

